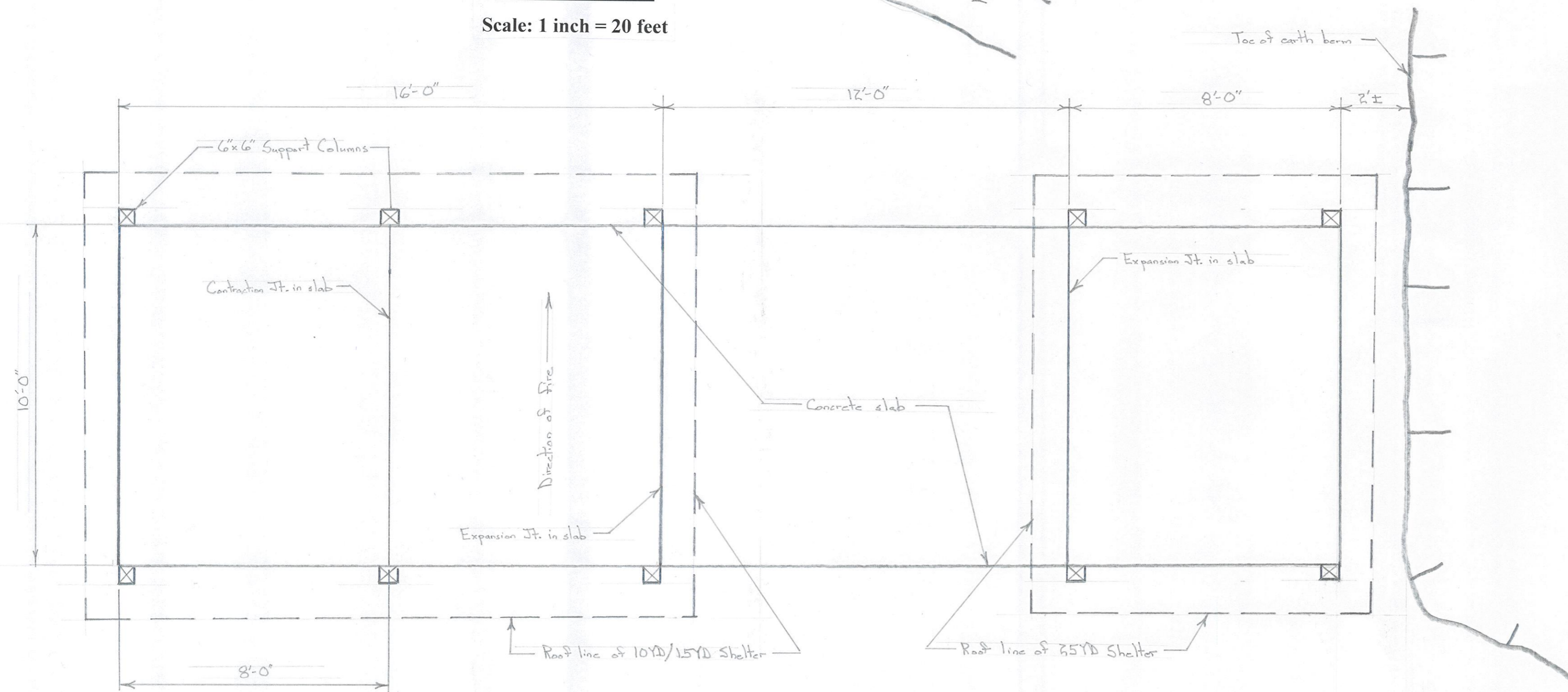


SITE PLAN

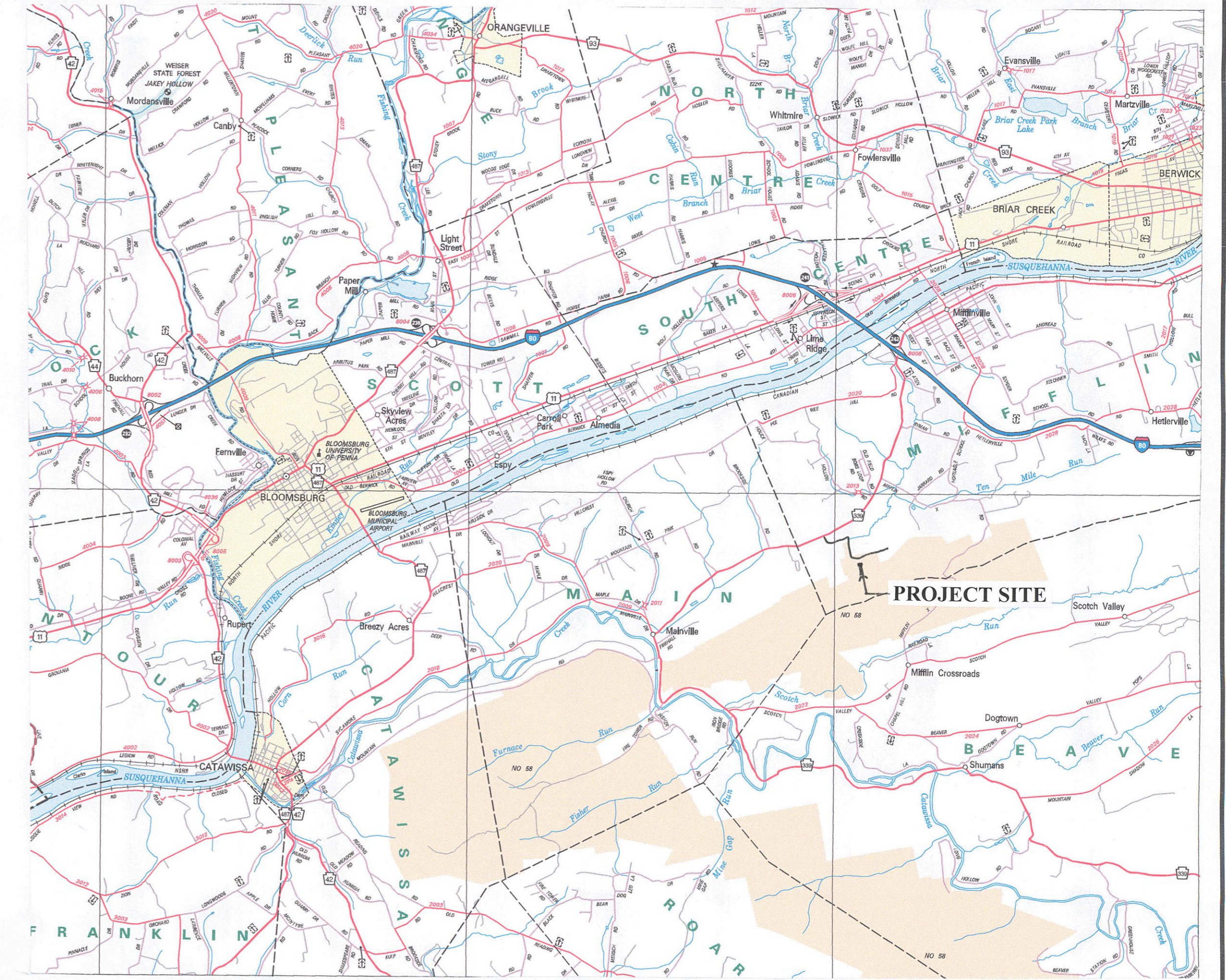
Scale: 1 inch = 20 feet



PLAN - PISTOL RANGE SHELTERS

Scale: 3/8" = 1'-0"

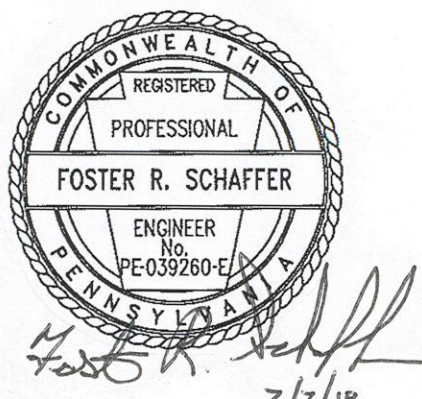
Note: See details on Sheet 2 & 3 for shelter structures.



LOCATION MAP

GENERAL NOTES

1. The work area for this project is on State Game Lands (SGL) #58 which is located in Mifflin Township, Columbia County. The shooting range is approximately 5 miles from Exit 242 on Interstate 80. The property is owned by the Pennsylvania Game Commission (PGC).
2. The work hours for this project site are during regular PGC business hours which are Monday through Friday, 7:45AM to 4:00PM. Work during different hours must have the prior written approval by the PGC. Requests for different working hours must be submitted two days in advance.
3. Access to the work area is on a stone surface PGC road which connects to PA Route 339. The access road must remain clear for use by private property owners located to the east of this site.
4. The shooting range will be closed during project construction. The Contractor is required to provide and install signs, barricades, warning tapes, etc. to protect the work areas. The PGC will issue press releases to notify the public of the project and the range closure during construction. The PGC will also post signs along the access road leading to the site stating that the range is closed.
5. The PGC will remove the three pipe frame shooting tables prior to construction. These pipe frames will be refurbished and given to the contractor to install in the new shooting station shelters. The PGC will also provide two additional pipe frames for the new range. The Contractor is responsible for placing new plywood tables and seats on the pipe frames.
6. The Contractor is responsible for demolition and disposal of the existing shooting station shelters including any concrete foundations.
7. The PGC will remove the existing sign boards prior to construction. The PGC will reinstall the sign boards after the project is complete.
8. The Contractor is responsible for installing the handicapped signs at the parking space and designated shooting table on the rifle range.
9. Concrete notes are shown on sheet 2 of 2.



PENNSYLVANIA GAME COMMISSION		
STATE GAME LANDS #58	MIFFLIN TWP.	COLUMBIA CO.
SHOOTING RANGE RENOVATION		
LOCATION MAP, SITE PLAN AND NOTES		
REVISIONS	PROJECT NO.	PGC-58-18-1
▲	DRAWN BY:	JS
▲	DATE:	2/07/18
▲	SHEET NO.	1 OF 2